

Suite in F à4

Paul Peuerl
(1570-1625)

Paduane

Four-part vocal setting of the Paduane. The score is written for Soprano (C), Alto (A), Tenor (T), and Bass (B) voices. The key signature is one flat (B-flat), and the time signature is common time (C). The music features a mix of half notes, quarter notes, and eighth notes, with some passages marked with a 'g' (grace note).

Continuation of the Paduane, starting at measure 10. The vocal parts continue with similar rhythmic patterns and melodic lines, including repeat signs and trill ornaments.

Continuation of the Paduane, starting at measure 18. The vocal parts continue with similar rhythmic patterns and melodic lines, including repeat signs and trill ornaments.

Continuation of the Paduane, starting at measure 28. The vocal parts continue with similar rhythmic patterns and melodic lines, including repeat signs and trill ornaments.

38

1. 2. Tanz

51

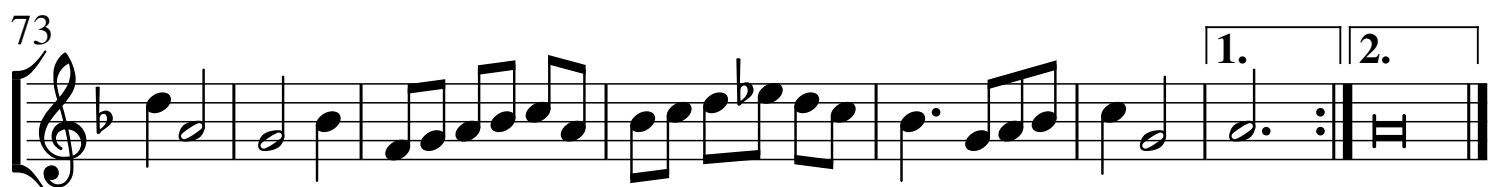
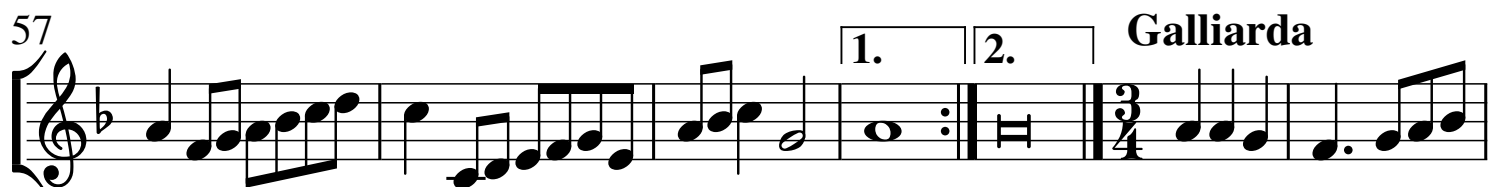
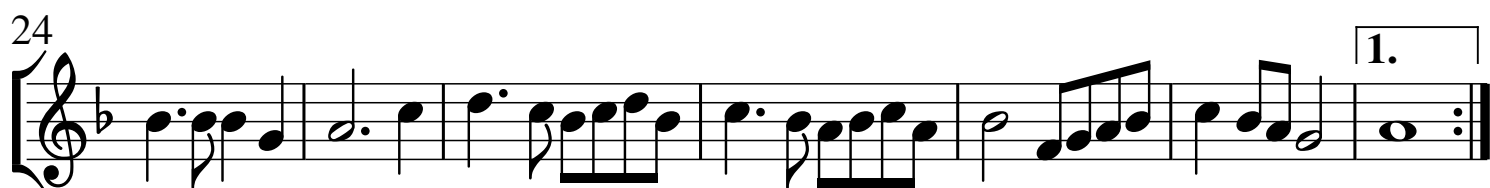
60

1. 2. Galliarda

72

1. 2.

Paduane



Alto

Suite in F à4

Paul Peuerl
(1570-1625)

Paduane

8

10

17

25

1.

2.

3

4

Intrada

32

40

1.

2.

Tanz

49

Galliarda

56

1.

2.

3

4

65

73

1.

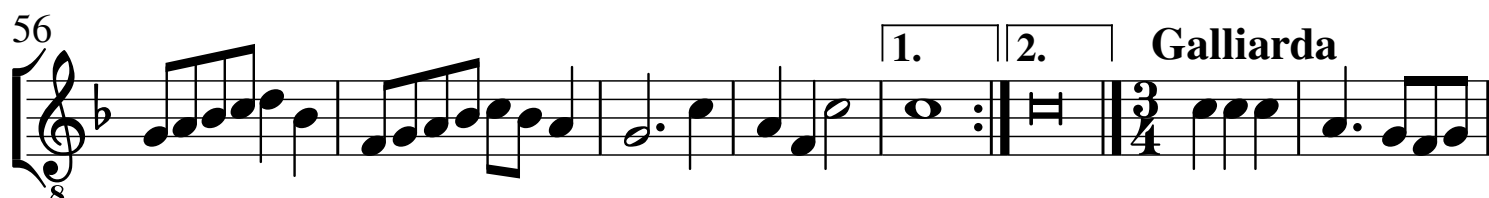
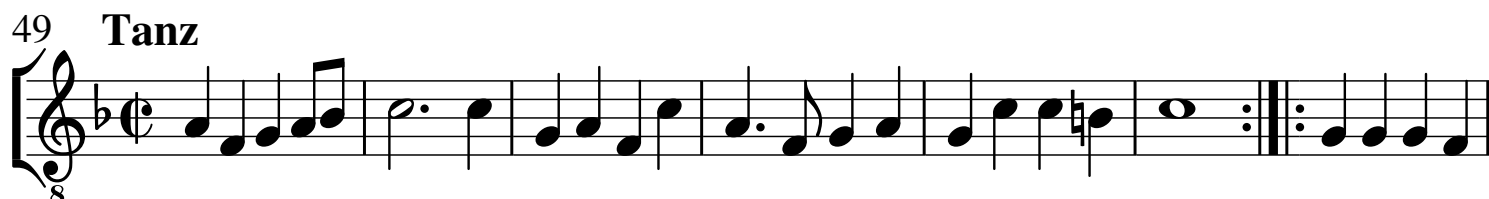
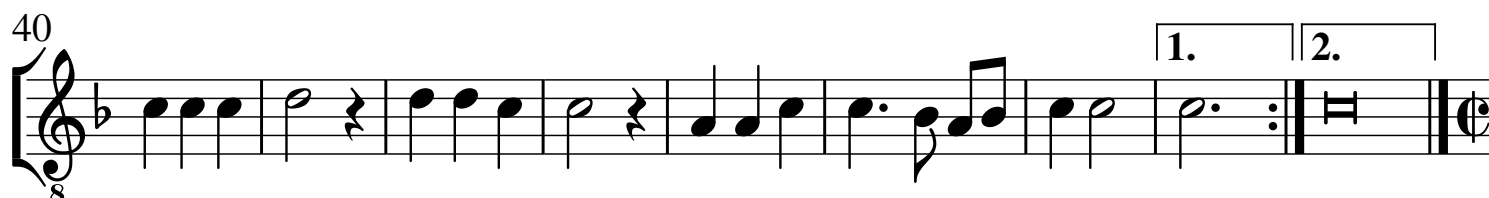
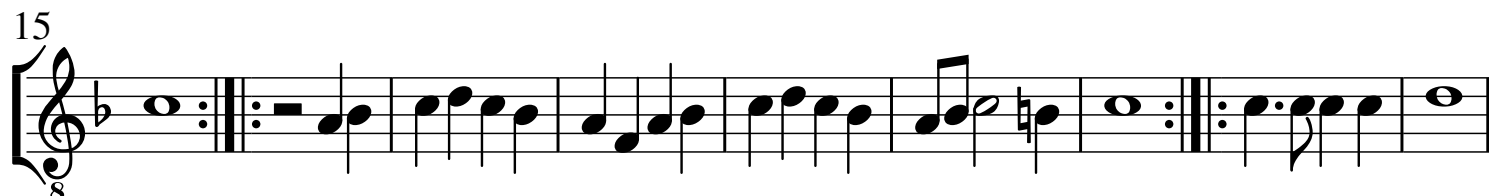
2.

Tenor

Suite in F à4

Paul Peuerl
(1570-1625)

Paduane



Paduane

